



Vestlandsbonden kan produsere mat – og samstundes ta vare på natur og klima!

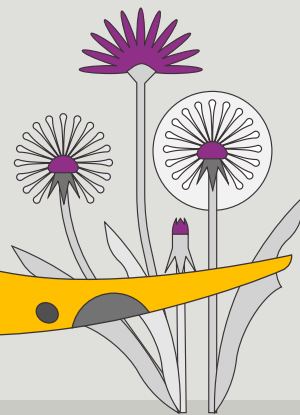
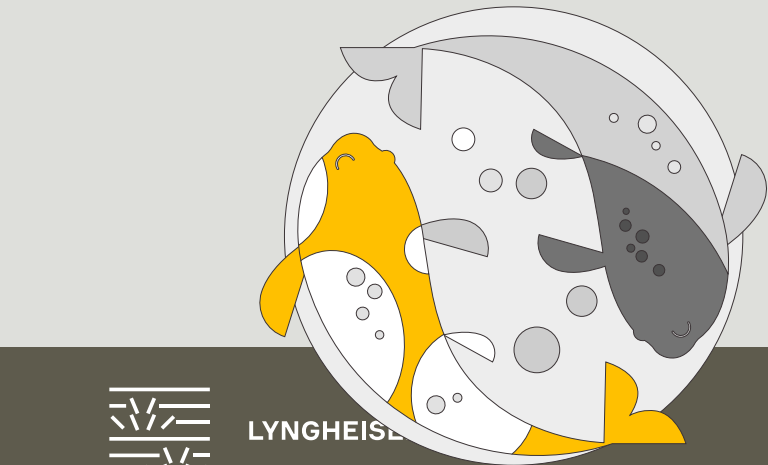
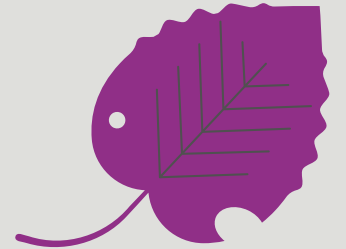
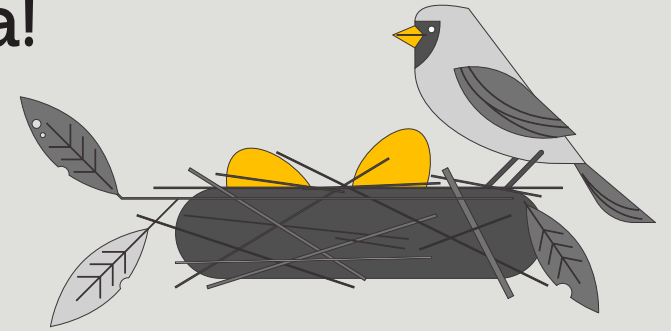
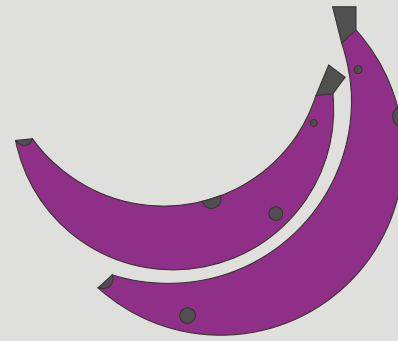
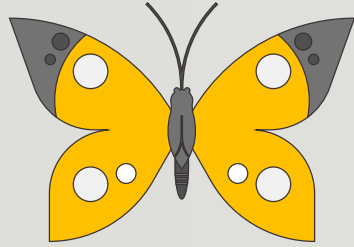
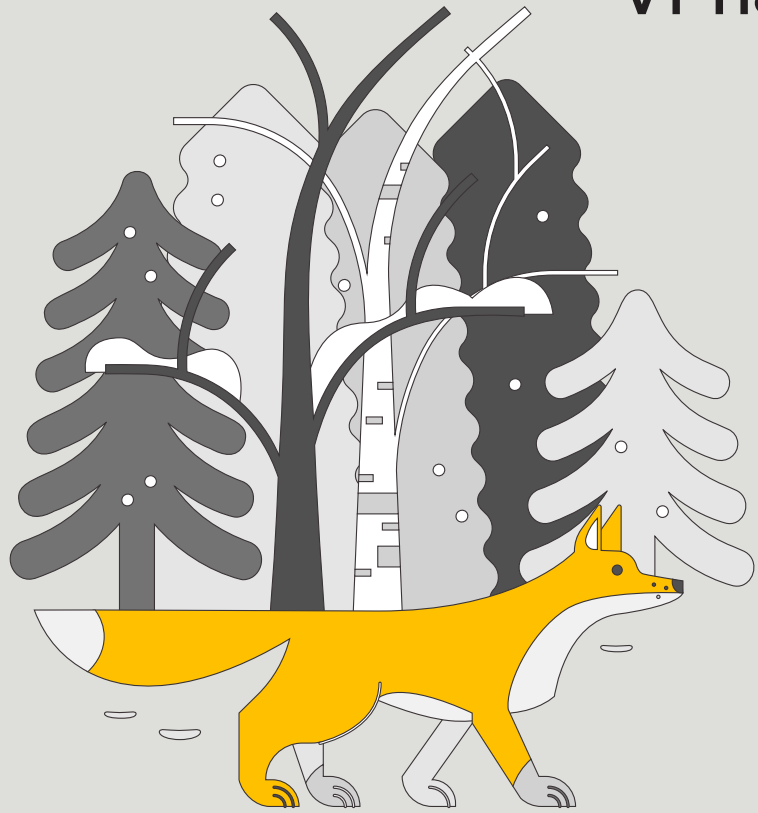
Siri Vatsø Haugum,
Fagansvarleg Lyngheisenteret



LYNGHEISENTERET

M U
H O

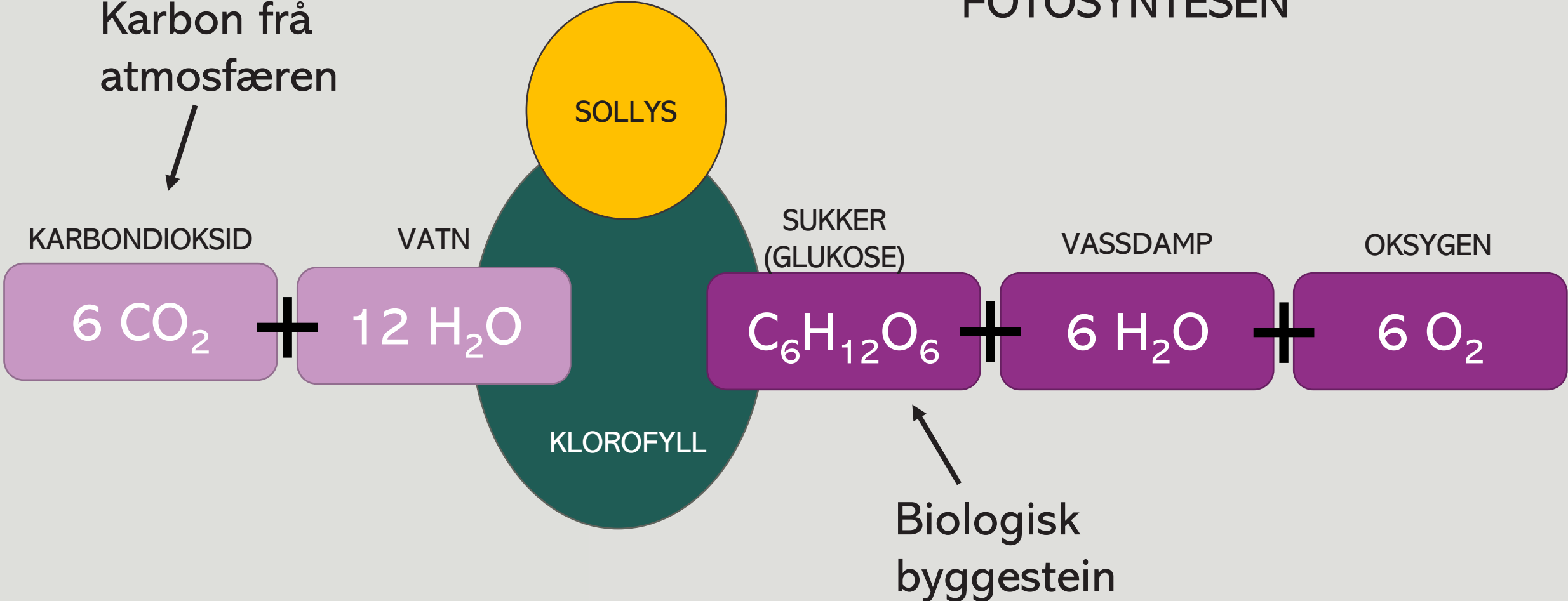
Vi har eit karbonbasert liv på Jorda!

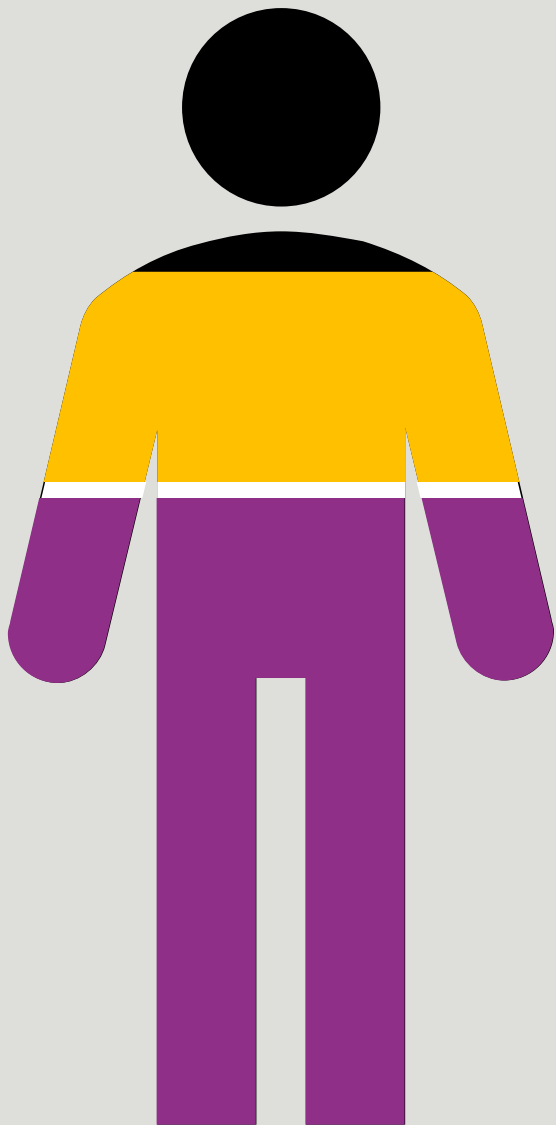


LYNNGEISEL

M U
H O

FOTOSYNTESSEN





70 kg

12,6 kg karbon

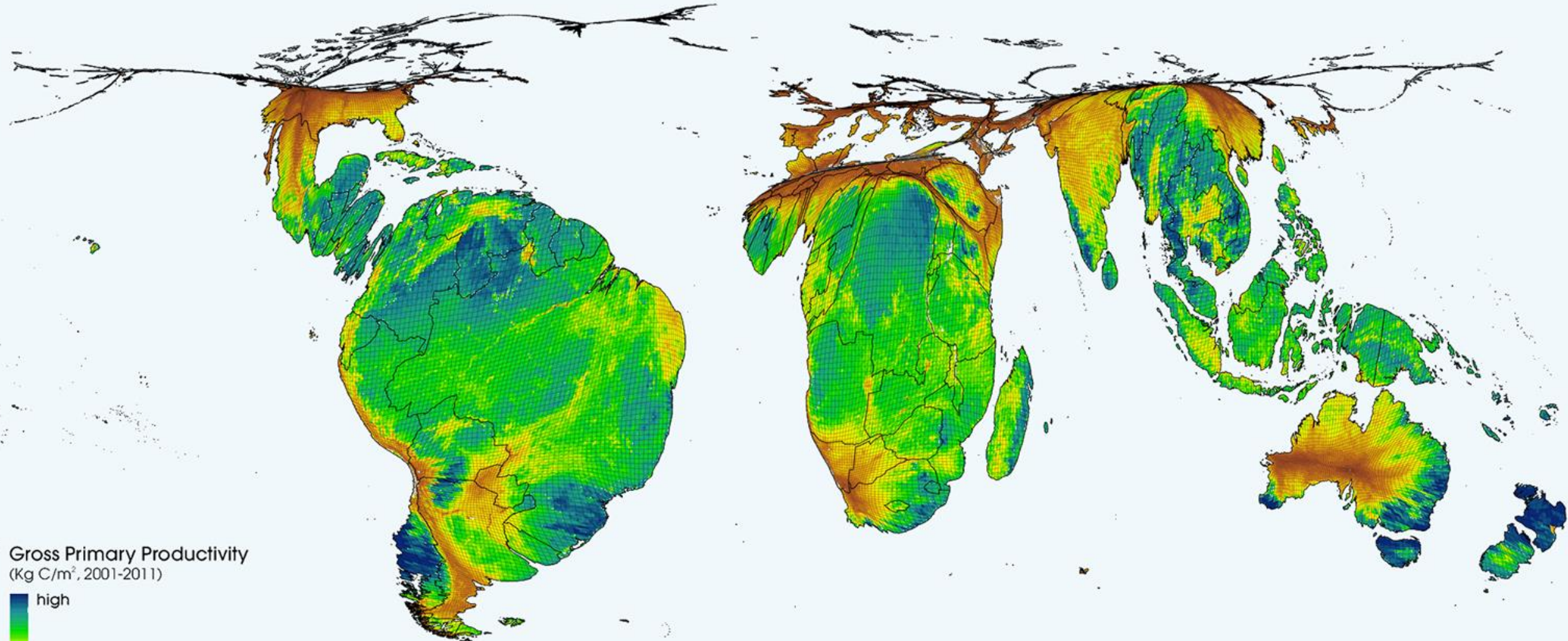
3 kg mineral og metall

42 kg vatn

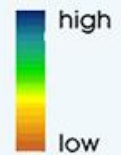
Tommelfingerregel: Tørrstoffet til levande ting består av om lag 50% karbon.



January



Gross Primary Productivity
(Kg C/m², 2001-2011)



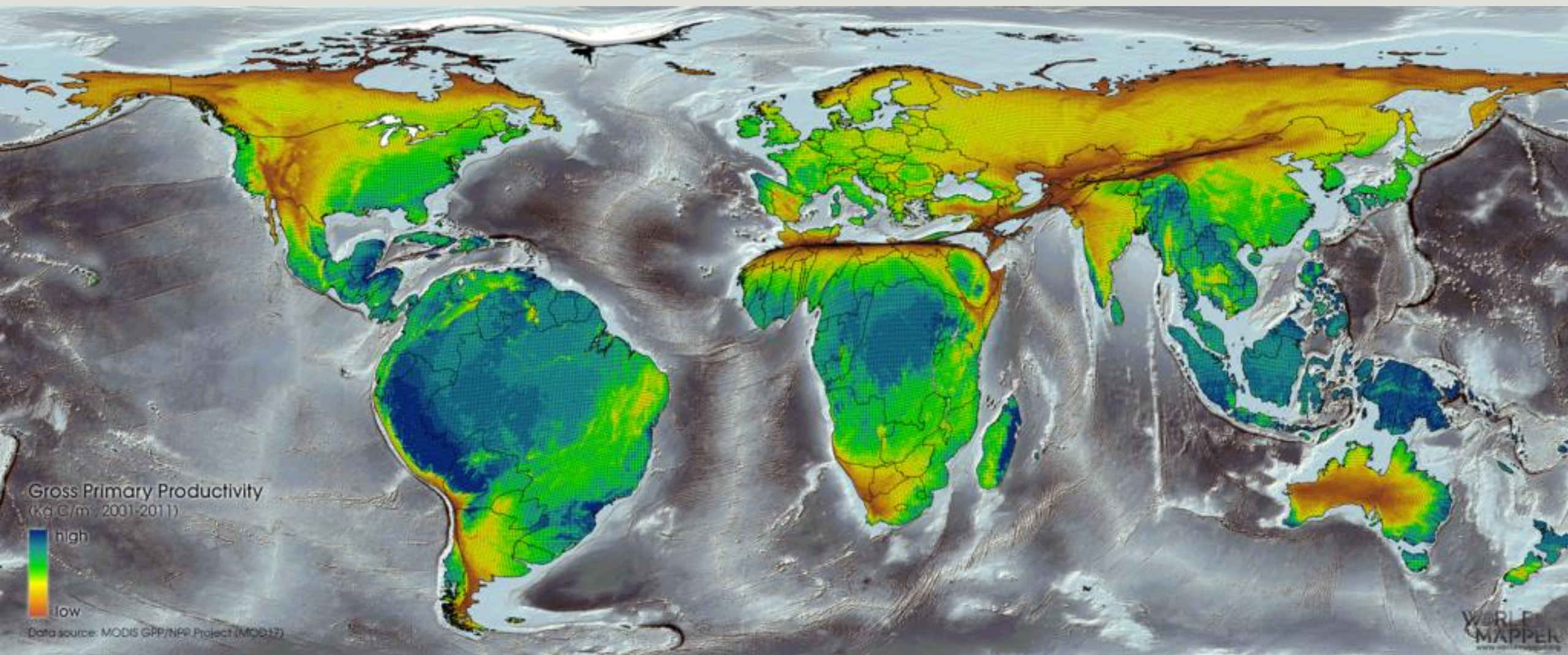
Data source: MODIS GPP/NPP Project (MOD17)

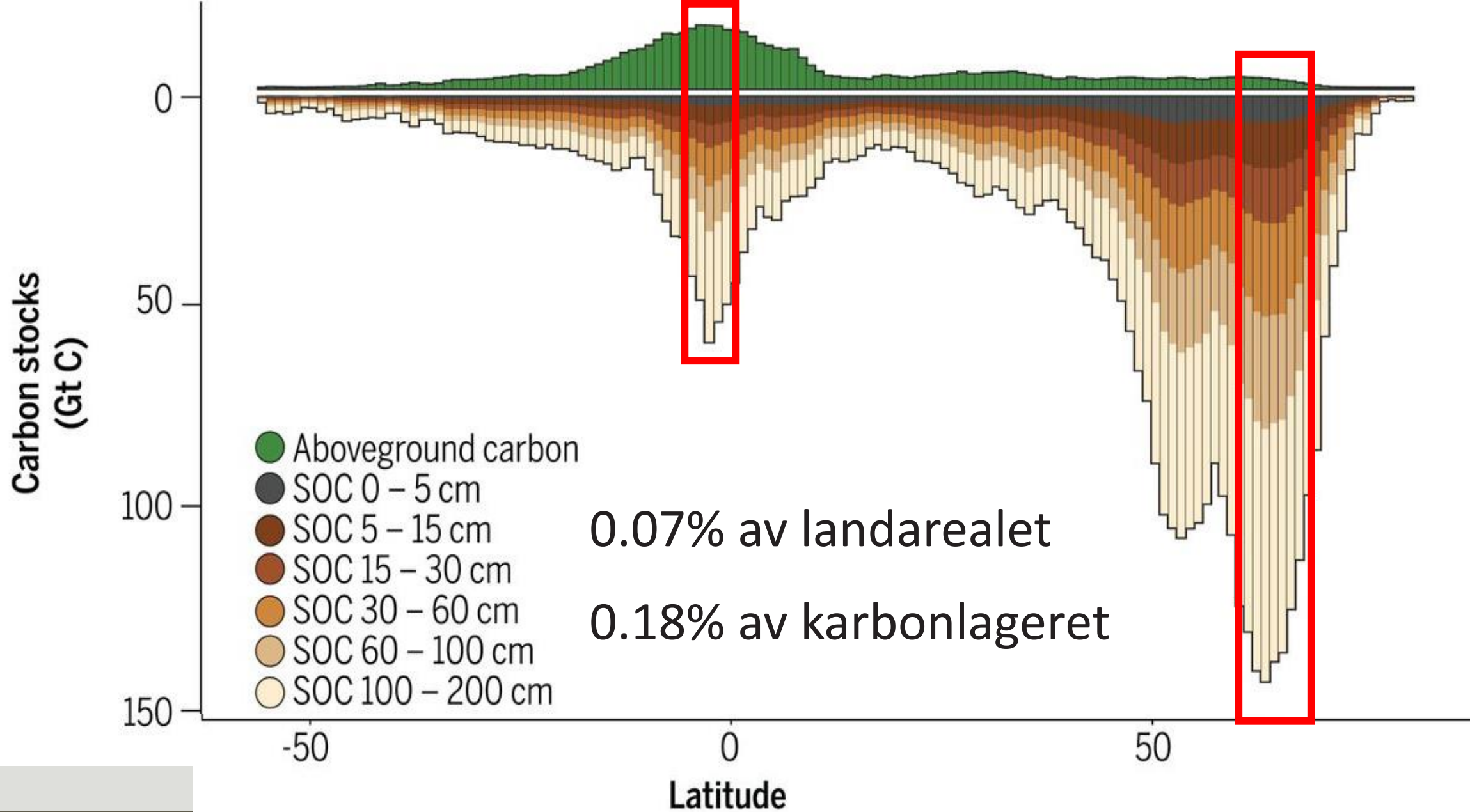
WORLD
MAPPER
www.worldmapper.org

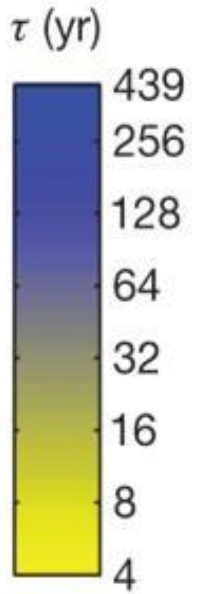
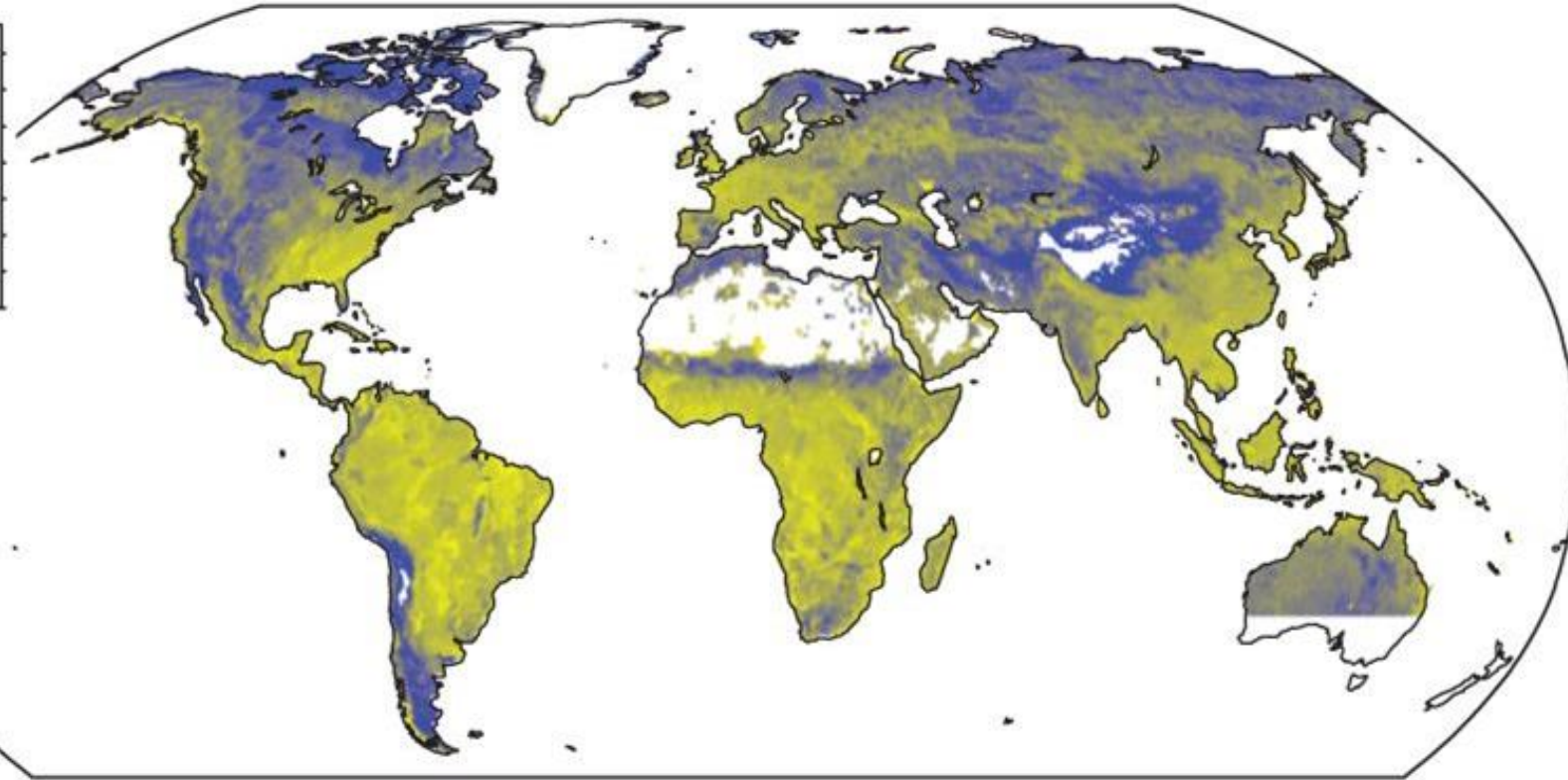
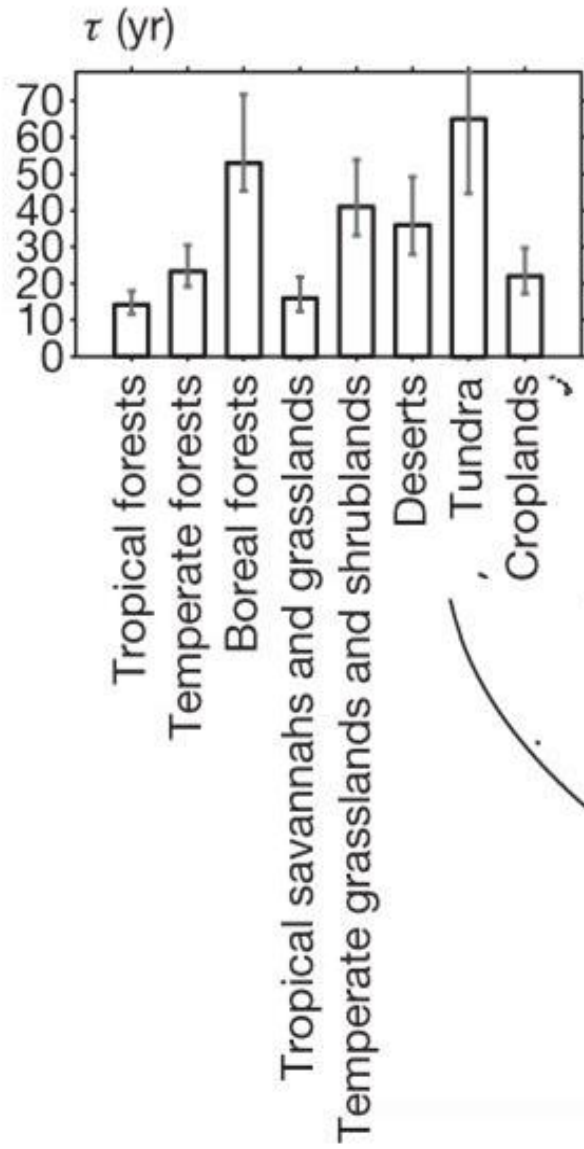


LYNGHEISENTERET

M U
H O







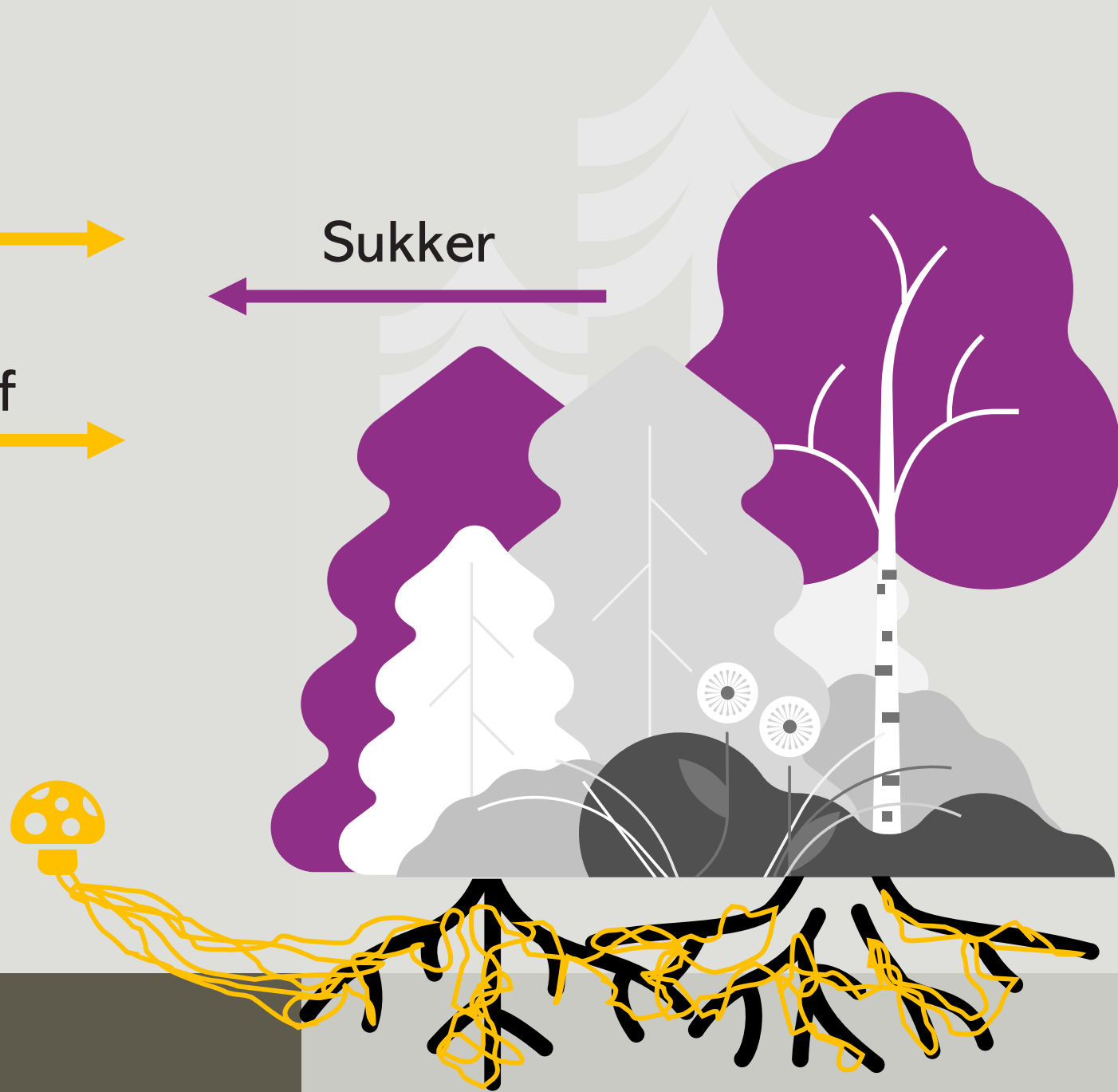
Vatn

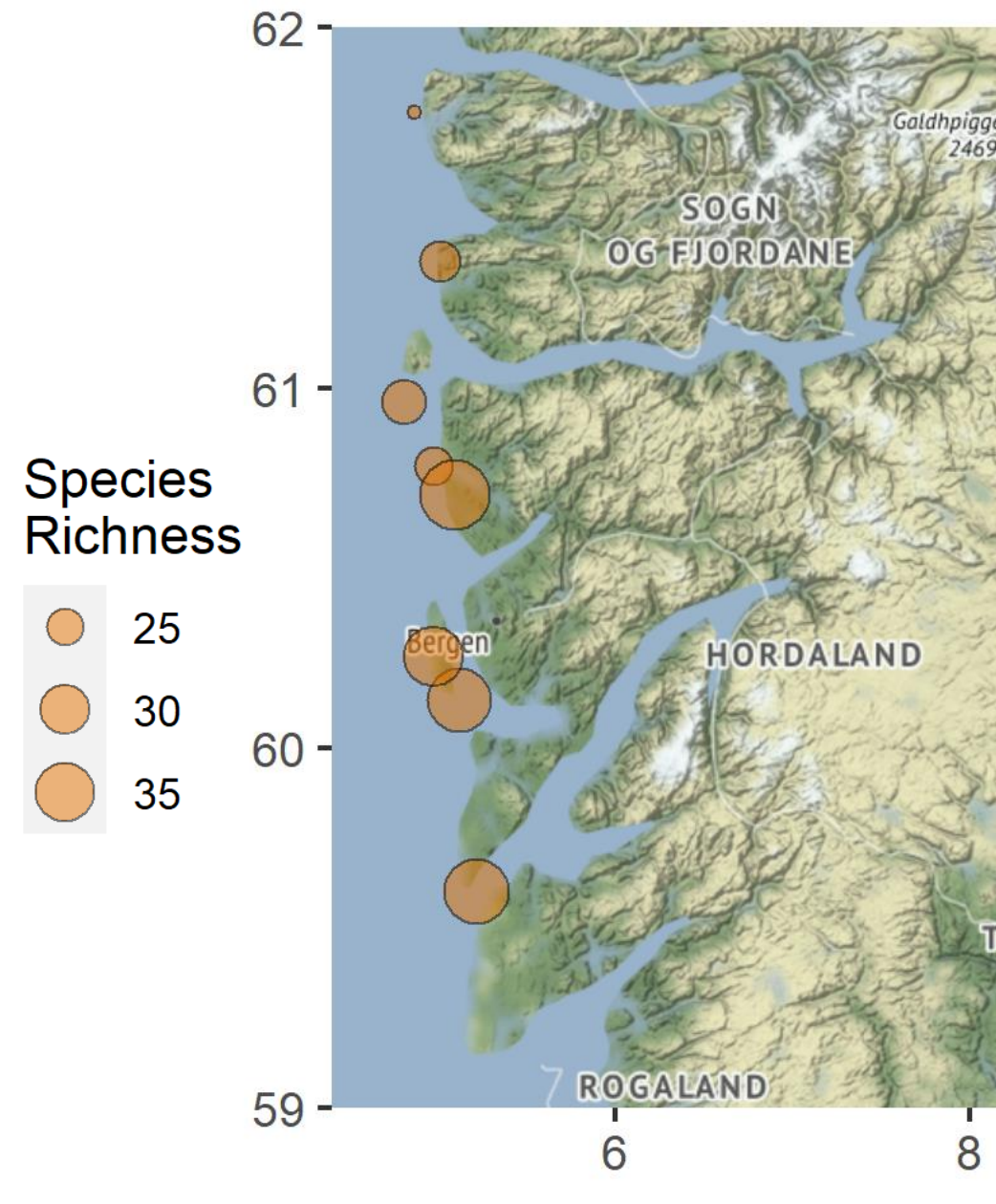


Sukker



Næringsstoff





Kvar lyngplante har mellom 11 og 20 soppartar knytt til seg

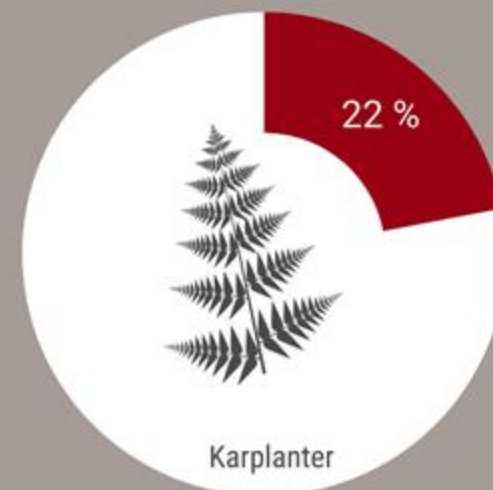
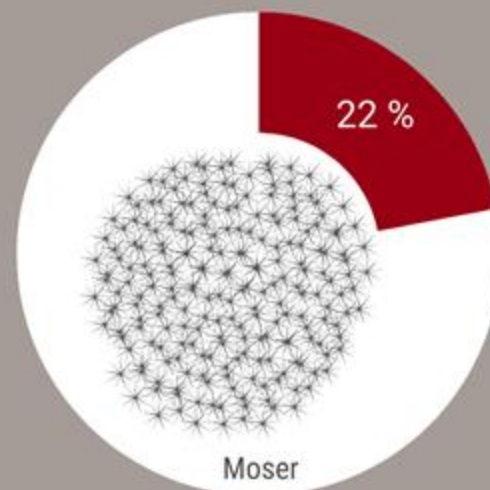
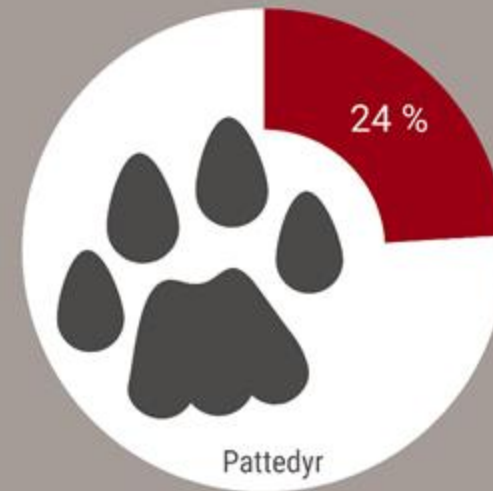
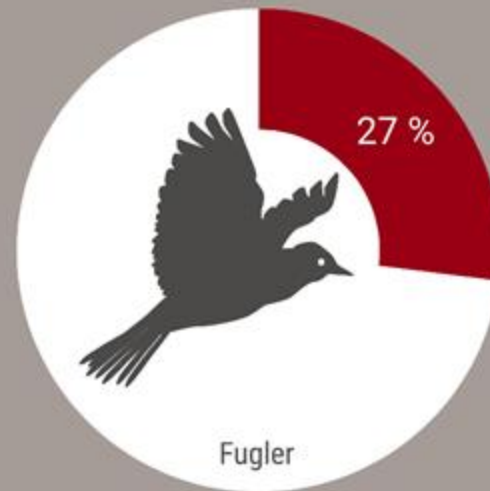
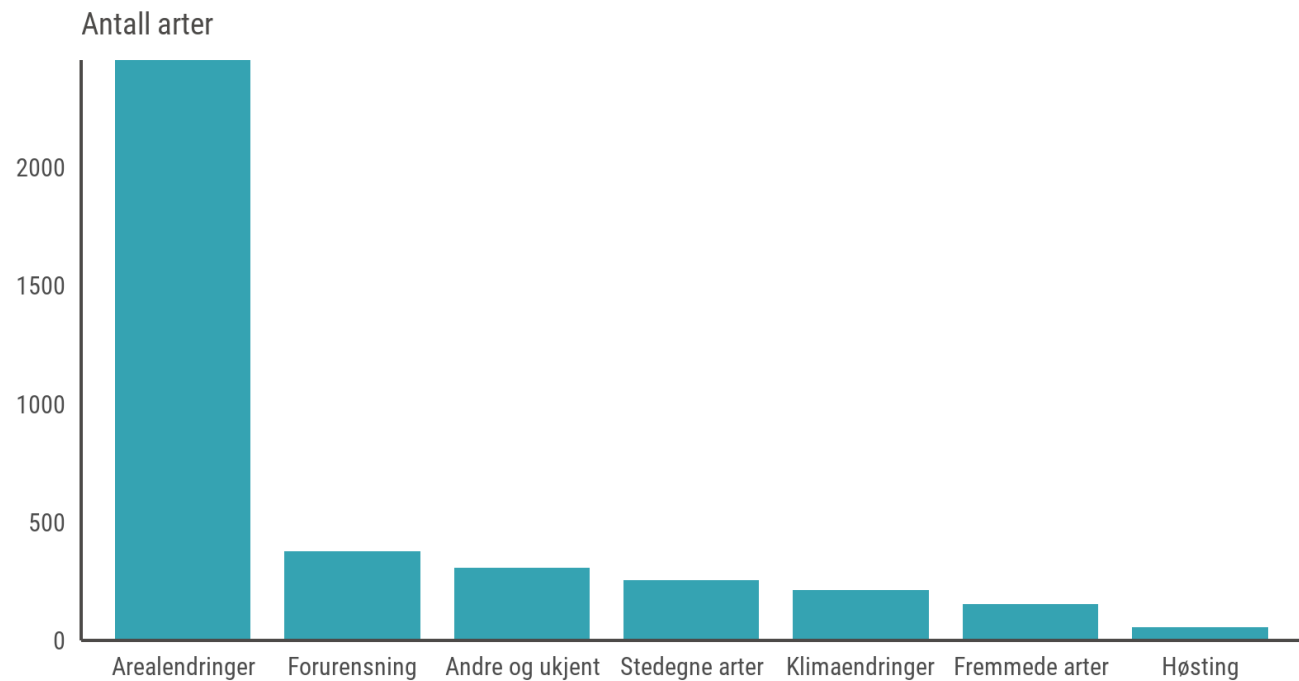
Høg heterogenitet – kvar lynghei har ei unik samansetting av sopp som truleg blir forma over tid med ulikt intervall/intensitet av drift



Er soppfamfunnet eit slags fingeravtrykk på kystlyngheia sin tilstand?

Ivaretaking av kystlynghei gir ivaretaking av oversett soppdiversitet





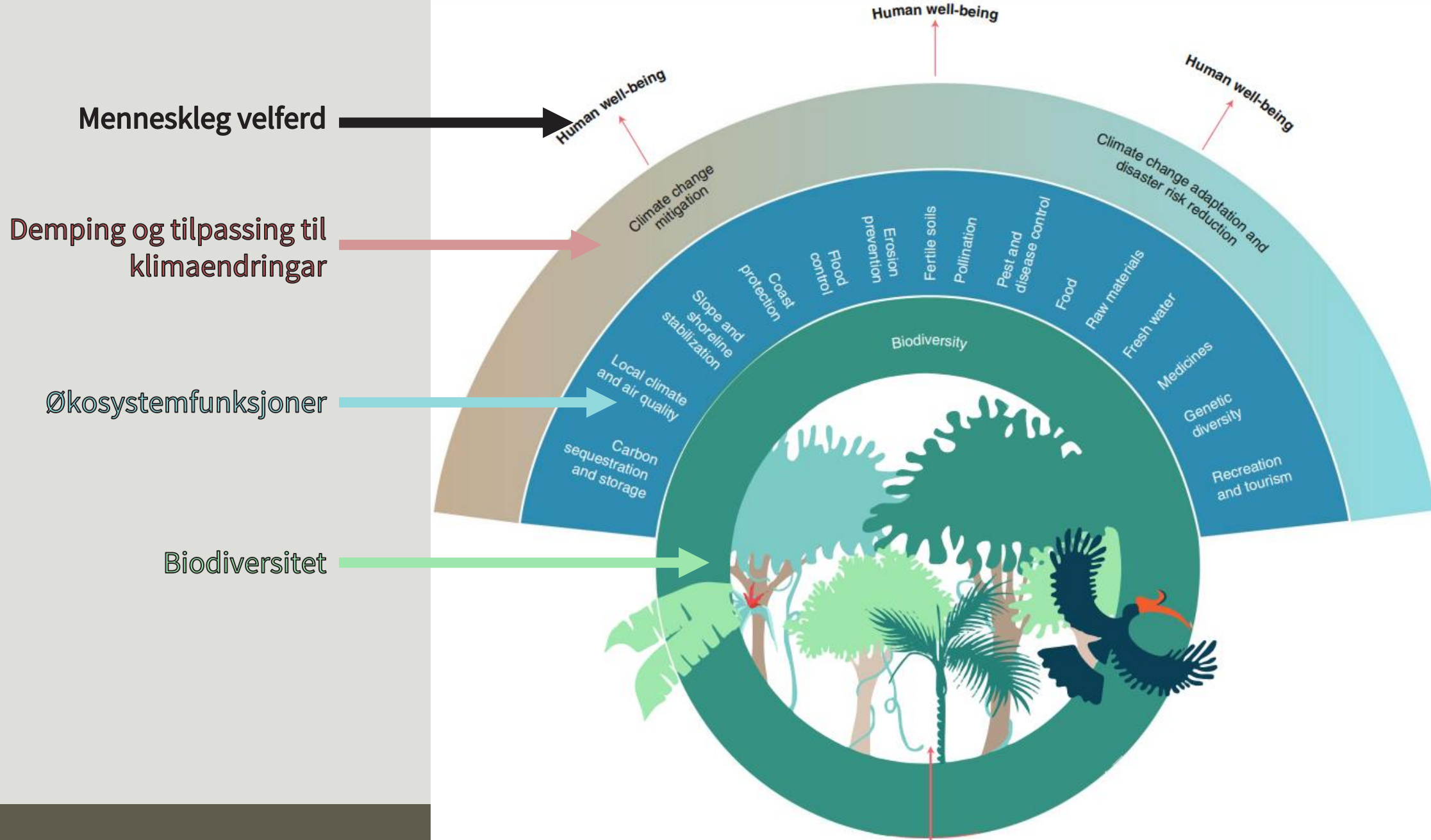
Norsk rødliste for arter 2021



LYNGHEISENTERET

Foto: S. Haugum / I. Måren / T. Mostrøm

M U
H O



Menneskelig velferd

Demping og tilpassing til klimaendringar

Økosystemfunksjoner

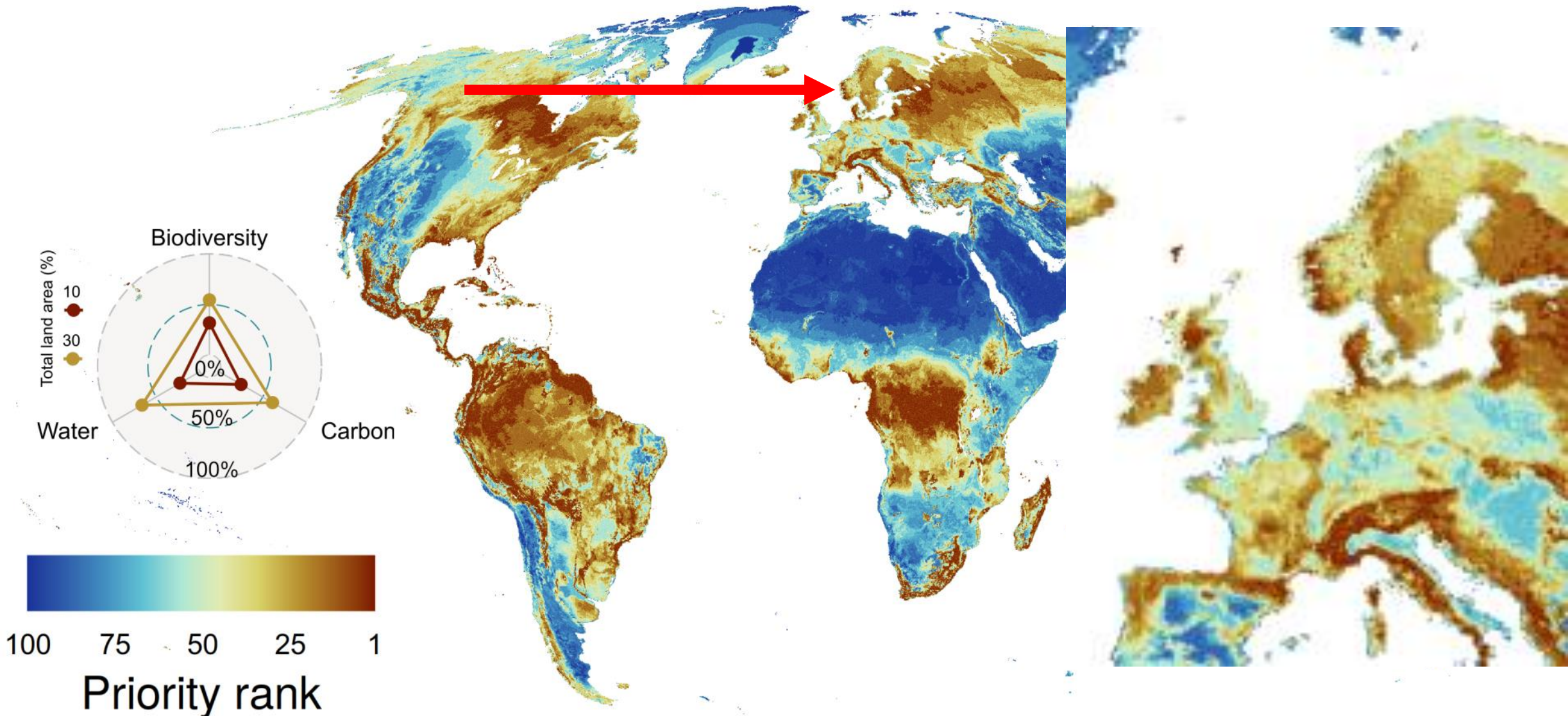
Biodiversitet

Seddon m. fl. (2019)

Nature-based solutions
Working with and enhancing nature



LYNGHEISENTERET



Priority rank



LYNGHEISENTERET

Foto: Per Olav Bøyum

M U
H O